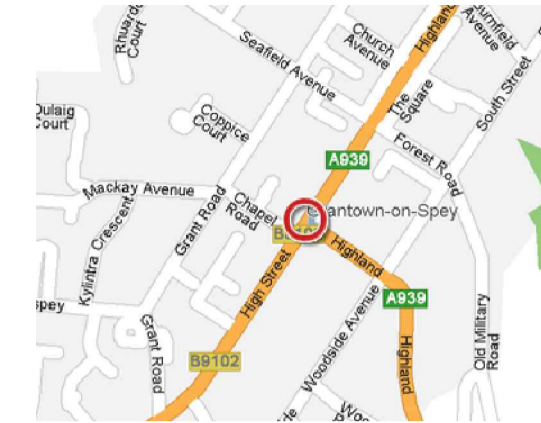


DUE TO SITE CONDITIONS, ALL ELEVATIONS TO BE TIED INTO EXISTING BUILDING USING M16 ANCHORS. CLIENT TO ENSURE BUILDING IS CAPABLE OF WITHSTANDING LOADS IMPOSED BY SCAFFOLD

ANCHORS SHOULD BE INSTALLED ONLY BY TRAINED PERSONNEL USING THE CORRECT TOOLS AND STRICTLY IN ACCORDANCE WITH MANUFACTURERS INSTRUCTIONS

9m APOLLO X-BEAMS. BRACED AT 1m INTERVALS. FIXED TO UPRIGHTS USING RIGHT ANGLE COUPLERS



GRANTOWN ON SPEY, MORAY SHIRE  
ALTITUDE, A = 222 m ABOVE SEA LEVEL  
WIND FACTOR, S = 29.33

**GENERAL NOTES:**

- A) This drawing is confidential and the exclusive property of Safe Access (Highland) Ltd. No unauthorised use, copy or disclosure is to be made and it is to be returned upon request.
- B) Construct in full compliance with BS EN 12811-1 (TG20:08) unless noted otherwise.
- C) Scaffold built from tubular materials and fittings conforming to BS 1139 : 1982 or type 4 tube to BS EN 39. All tube must be in 'as new' condition.
- D) Scaffold built with load bearing fittings, except intermediate bearers below platform level and boards fixed with non-load bearing fittings.
- E) This drawing has been prepared from details supplied to us by the enquirer/client, who should check that we have correctly interpreted his/her requirements and that all loadings, dimensions, details, erection and striking sequences are correct and practicable. No alteration in the loading may be made without prior reference.
- F) The client is to prepare and ensure that any foundations/supports are suitable for supporting the loads imposed upon it by our scaffold including its working load.
- G) No sheeting whatsoever, unless already shown, should be added to the scaffold without prior reference.
- H) It is the responsibility of the client/enquirer to ensure that adequate facilities or tying the scaffold are made available and that the building or structure is capable of withstanding the loads applied to it by the scaffold and its working load.
- I) No ties or braces re to be removed or any modifications to be made to the scaffold without prior reference.
- J) The enquirer/client is to design, supply and fix all necessary auxiliary equipment including but not limited to, shuttering, timber, bearers, steel joists and to ensure that such auxiliary equipment is capable of safely transmitting the loads to the standards.
- K) The enquirer/client will be responsible for setting out and final leveling of scaffolding or similar equipment used as a system support.
- L) All dimensions are as stated or as calculated
- M) This drawing has been prepared on the assumption that all loads will be applied axially to the tubes unless specifically stated.

**DESIGN LOADS:**

THIS SCAFFOLD HAS BEEN DESIGNED FOR THE FOLLOWING:-  
1 NO. LIFTS @ 2.0 kN/m<sup>2</sup>  
1 NO. LIFTS @ 1.0 kN/m<sup>2</sup>

THE CLIENT MUST ENSURE THAT NO LOADS IMPOSED ARE GREATER THAN THE ALLOWABLE STATED LOADS

THE SCAFFOLD STRUCTURE DETAILED ON THIS DRAWING HAS BEEN DESIGNED TO BE ERECTED USING ONLY MATERIALS SUPPLIED OR APPROVED BY SAFE ACCESS (HIGHLAND) LTD

Drawing Status

**WORKING DRAWING**

Rev	Date	Description	Checked	Drawn

Drawing Title

Client

**Safe Access**  
(Highland) Ltd

A: 22b Longman Drive  
Inverness  
IV1 1SU  
T: 01463 (711750)  
M: 07527 135487  
E: rm1safeaccess@btinternet.com  
W: www.safe-access.co.uk

Scale	Date	Drawing Number	Rev

Drawn  
R.MAIR

Checked By

RETURN TRANSOMS TO BE USED WITH ALL GAPS FILLED USING LAPPING BOARDS AND TUBE & FITTING

ELEVATION TO BE TIED INTO EXISTING BUILDING AND BUTTED ON BOTH SIDES

2 No. 9m APOLLO X-BEAMS LACED AND BRACED IN PAIRS @ 1m INTERVALS

PUBLIC ACCESS

RETURN TRANSOM TO BE USED AT ALL 90° INTERSECTIONS

PLAN BRACING REQUIRED

ADJACENT UPRIGHTS TIED USING SHORT TUBE AND 90° COUPLERS

ALL GAPS TO BE FILLED USING TUBE & FITTING AND LAPPING BOARDS

**PLAN VIEW**

CLIENT TO CONFIRM SUITABILITY OF BUILDING STRUCTURE TO SUSTAIN LOADS TRANSFERRED FROM THE SCAFFOLD

MAX LEG LOAD: 8.96 kN

FRONT ELEVATION HAS BEEN DESIGNED TO HAVE 3 NO. WORKING LIFTS DEBRIS NETTED

PLAN BRACING REQUIRED IF TIES CANNOT BE INSTALLED

2.7m PAVEMENT GENTRY. TO BE TIED AT FIRST LIFT

FACE BRACING INSTALLED AS PER KWIKSTAGE USER MANUAL

LOADING:  
1 No. WORKING LIFT @ 2.00 kN/m<sup>2</sup>  
+ 1 No. WORKING LIFT @ 1.00 kN/m<sup>2</sup>  
ALL INSIDE BOARDS 0.75 kN/m<sup>2</sup>

FIRST LIFT HEIGHT TO BE DETERMINED ON SITE BY CLIENT AGENT

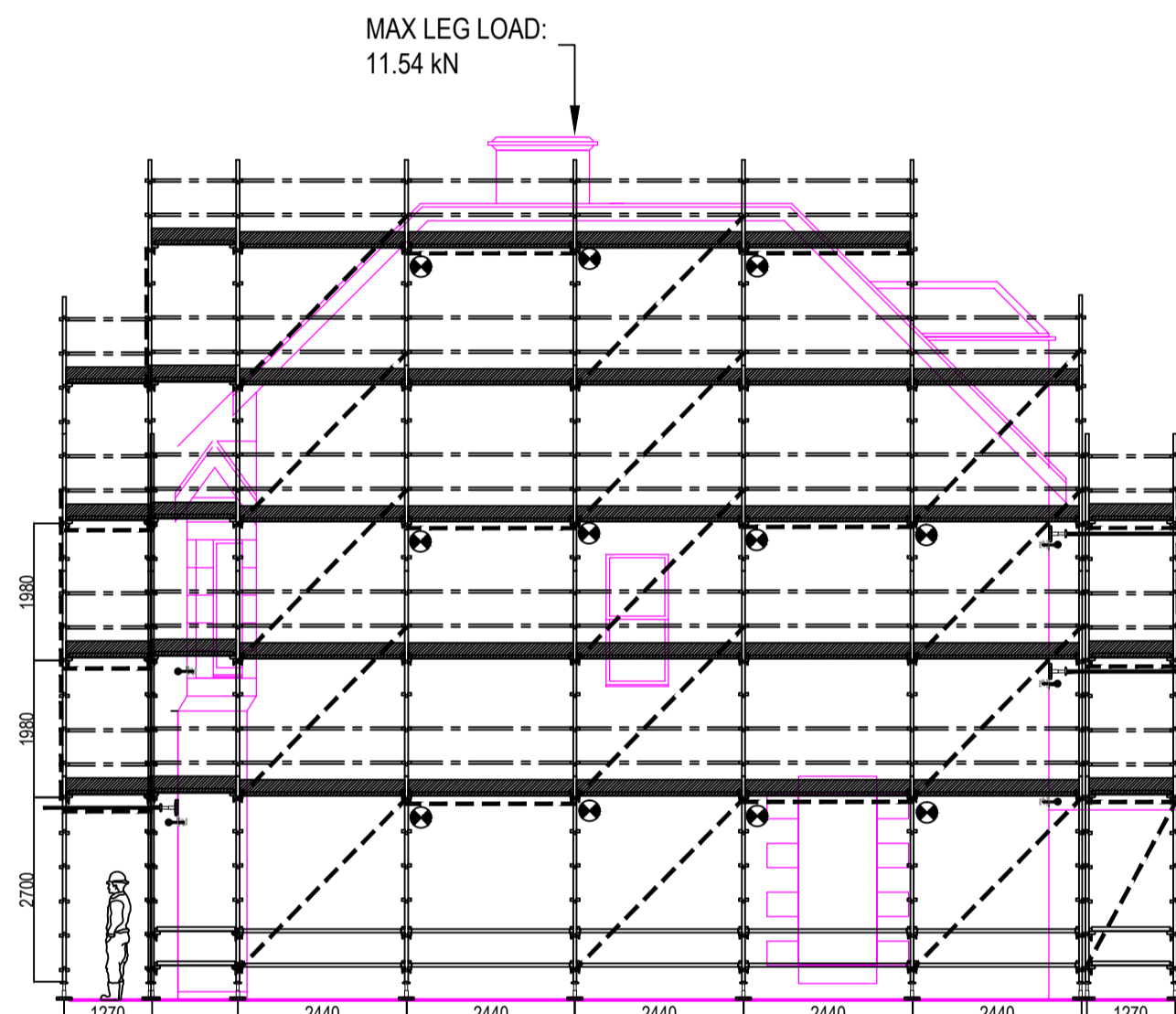
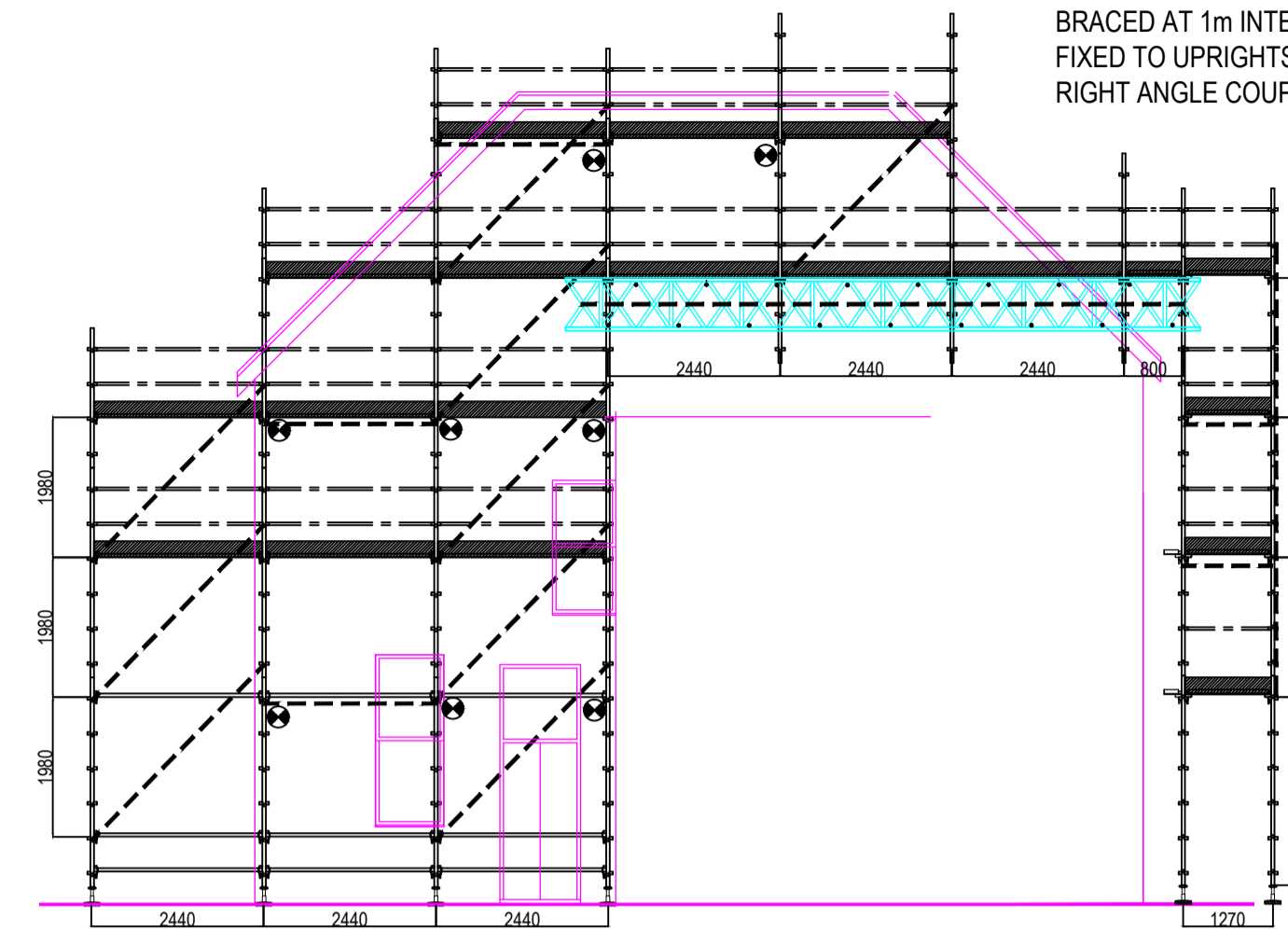
**FRONT ELEVATION**

**NOTES:**

- DUE TO UNFORESEEN SITE CIRCUMSTANCES, THE SCAFFOLD ERECTED MAY DIFFER FROM THAT NOTED. IF IN ANY DOUBT CONTACT SAFE ACCESS (HIGHLAND) LTD TO DISCUSS.
- ALL ALLOWABLE LOADS AND DETAILS ARE BASED ON THE USE OF EQUIPMENT WITH SWL RATINGS IN ACCORDANCE WITH GENUINE KWIKSTAGE COMPONENTS.
- CLIENT TO ENSURE FIRM & LEVEL BASES CAPABLE OF SAFELY SUPPORTING LOAD FROM SCAFFOLDING WITHOUT UNDUE SETTLEMENT OR DEFLECTION.
- BUTTRESS & LOADING BAY TO BE ERECTED IN ACCORDANCE WITH EQUIPMENT USER MANUAL.
- ALL SCAFFOLD MATERIALS TO COMPLY WITH BS 1139.

CLIENT TO ENSURE GROUND BEARING PRESSURES ADEQUATE TO SUPPORT AXIAL LOADS IMPOSED BY UPRIGHTS

**SIDE ELEVATION**



**SIDE ELEVATION**

ADEQUATE SOLE BOARDS MUST BE USED TO TRANSFER AXIAL LEG LOAD TO THE GROUND

PEDESTRIAN WALKWAY. ALL STANDARDS SHOULD BE ENCLOSED TO PREVENT HARM TO PUBLIC

DOUBLE GUARD RAILS AND TOEBOARDS ON ALL WORKING LIFTS

PLAN BRACING SECURED TO UPRIGHTS AS SHOWN

LEDGER BRACING REQUIRED FIXED TO UPRIGHTS WITHIN 300mm OF NODE POINT

1 No. INSIDE GUARD RAIL

TWO WAY TIE USING HILTI M16 ANCHOR WITH TUBE AND COUPLERS

TUBE WITH JACK BUTTED AGAINST BUILDING

**REAR ELEVATION**

ADEQUATE TIMBER SOLE BOARDS TO BE USED TRANSFERRING LEG LOADS TO GROUND. MIN 0.1m<sup>2</sup>